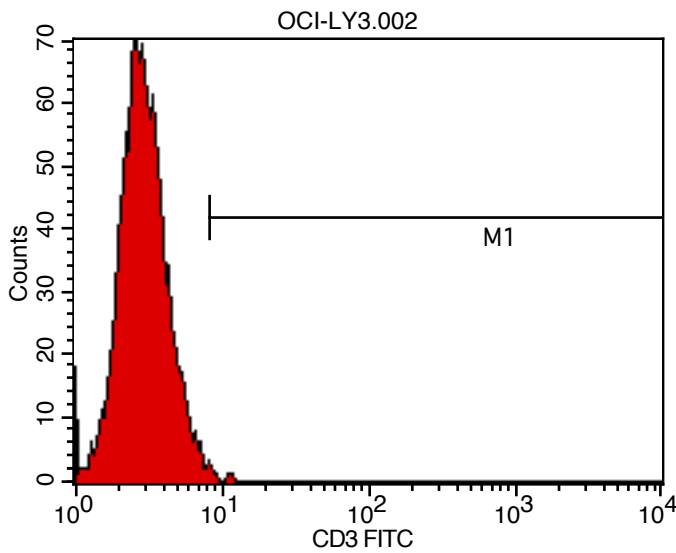
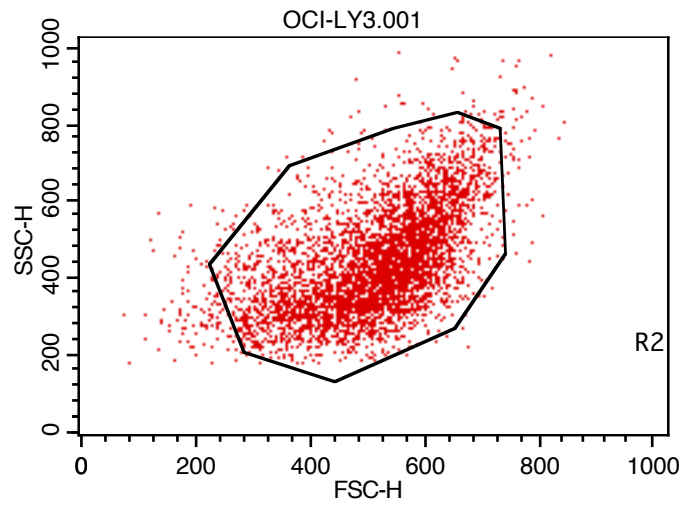
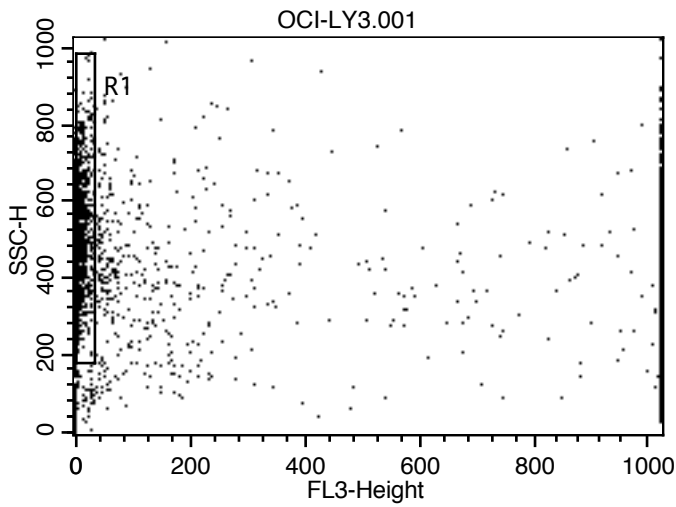
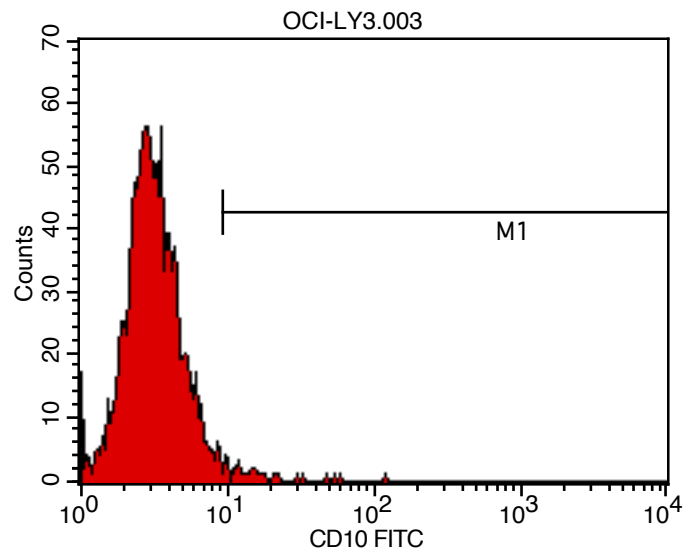


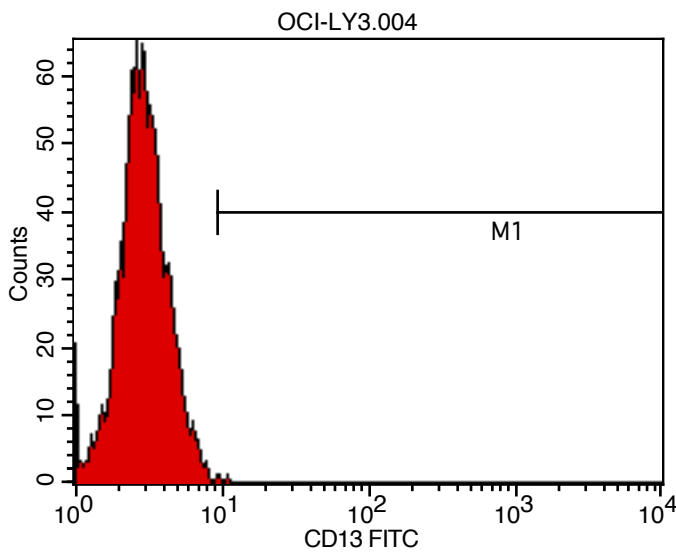
OCI-LY3 (ACC 761)



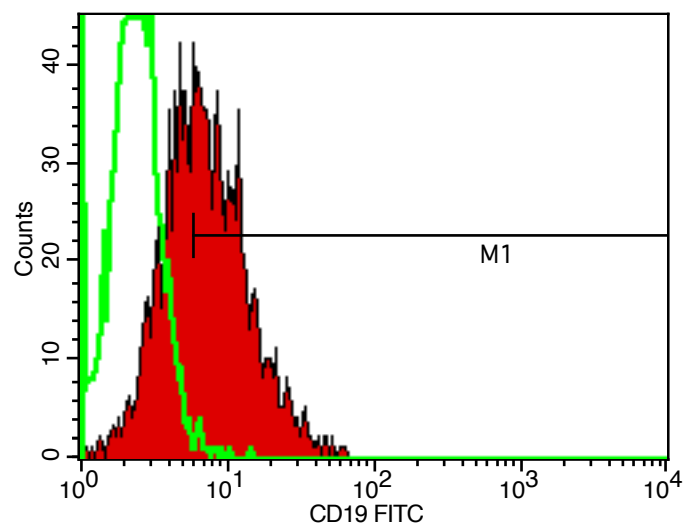
CD3: 0%



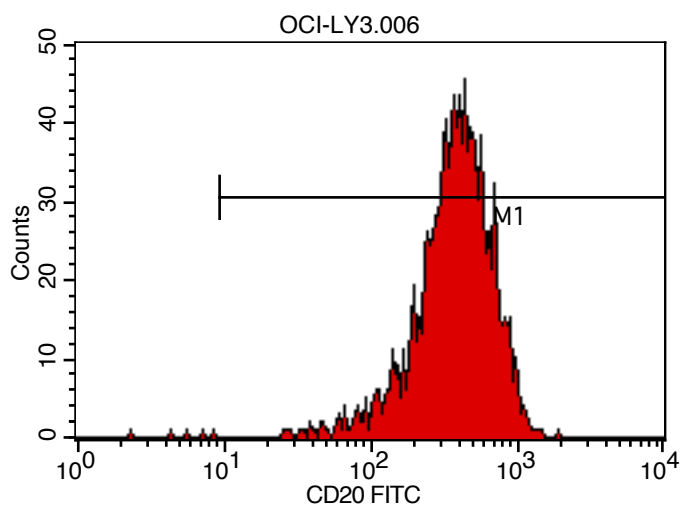
CD10: 1%



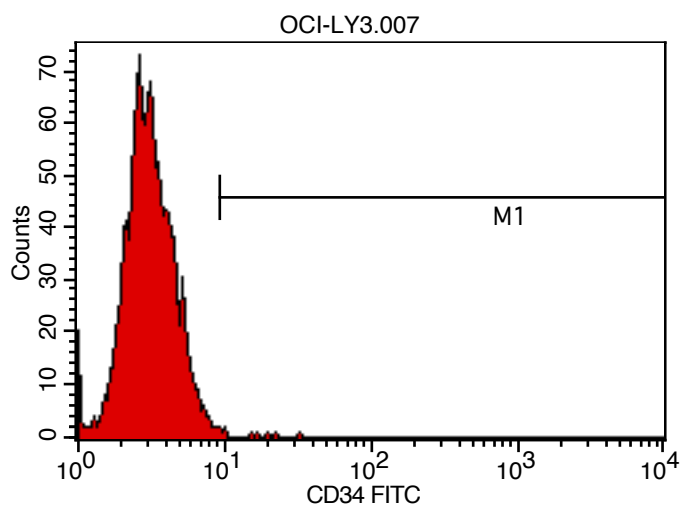
CD13: 0%



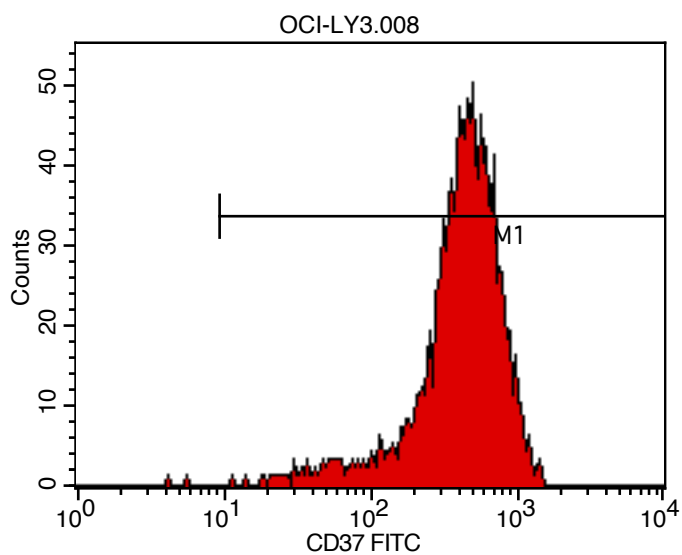
CD19: 59%



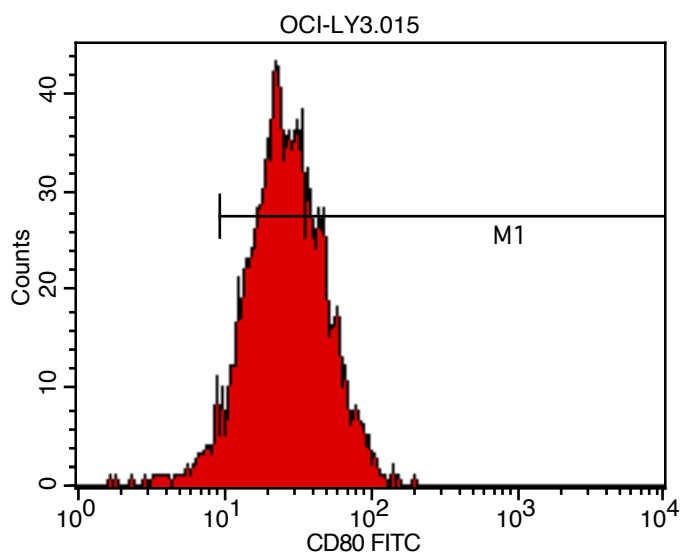
CD20: 99%



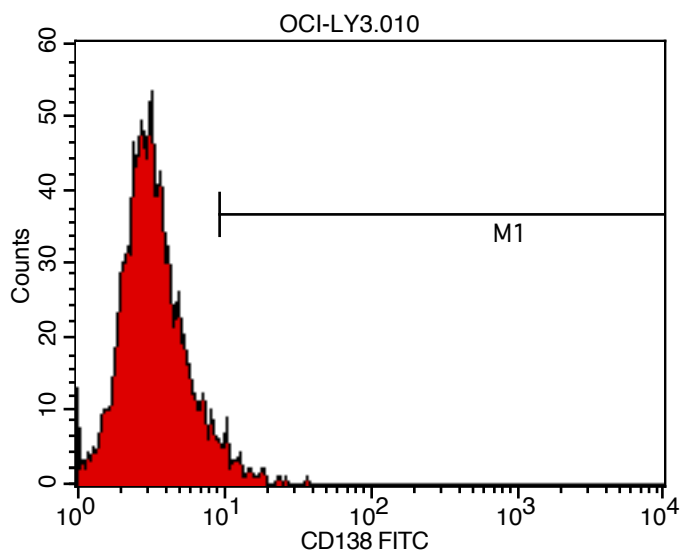
CD34: 0%



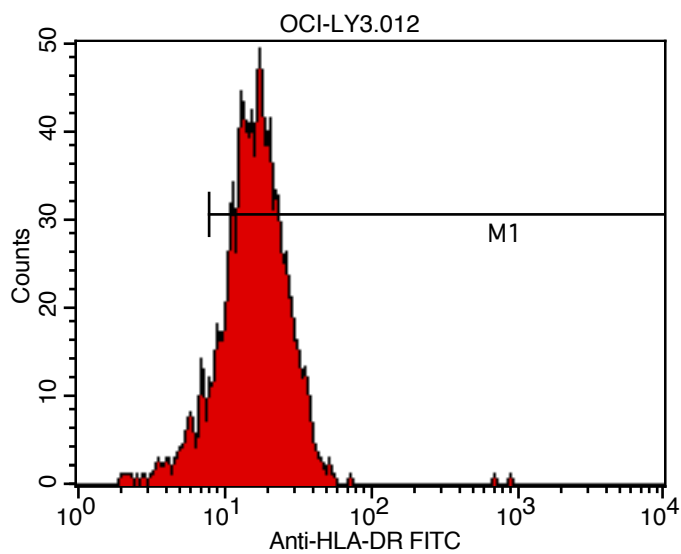
CD37: 99%



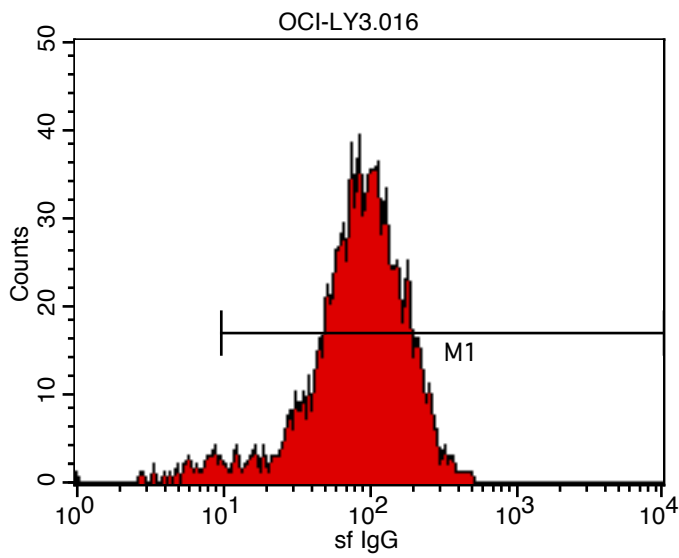
CD80: 96%



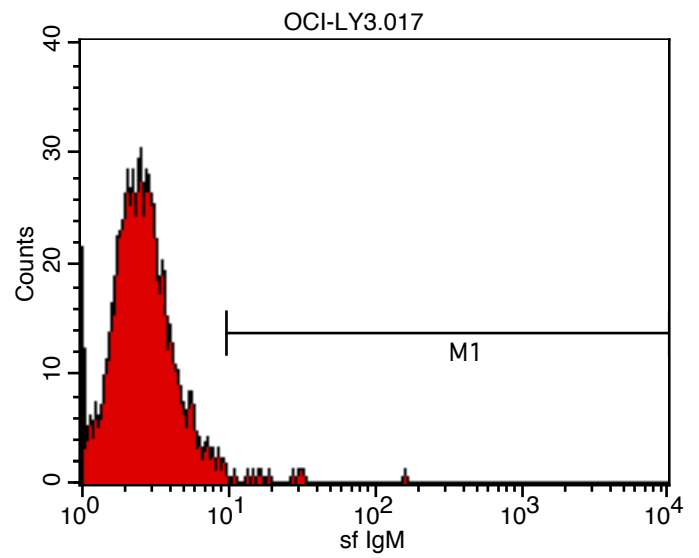
CD138: 2%



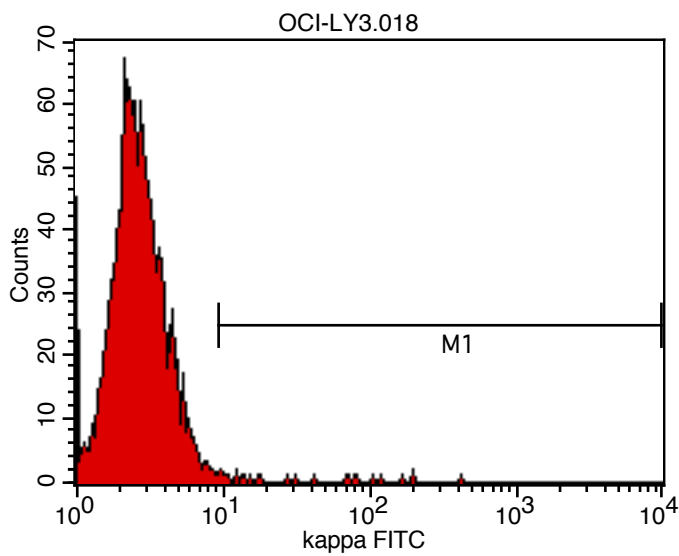
HLA-DR: 93%



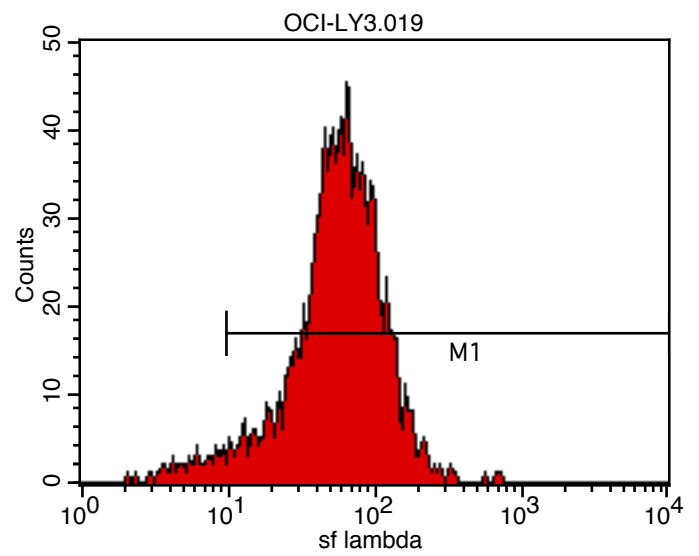
sf IgG: 98%



sf IgM: 0%



sf kappa: 0%



sf lambda: 97%