

Compendium of Actinobacteria from Dr. Joachim M. Wink
University of Braunschweig

Strain		DSM 18563
Genus		<i>Terrabacter</i>
Species		<i>aeriphilus</i>
Status		
Risk group		L1
Type strain		KACC 20693, 5414T-18
Reference		
Author		Weon, H. Y., Son, J. A., Yoo, S. H., Kim, B. Y., Kwon, S. W., Schumann, P., Kroppenstedt, R., Stackebrandt, E.
Title		<i>Terrabacter aeriphilus</i> sp. nov., isolated from an air sample.
Journal		<i>Int J Syst Evol Microbiol</i>
Volume		60 (Pt 5)
Page		1130-1134
Year		2010
Morphology		
Agar	ISP 2 - growth/G	Good
Agar	ISP 2 - colony color/R	Maize yellow (1006)
Agar	ISP 2 - aerial mycelium/A	None
Agar	ISP 2 - soluble pigment/S	Maize yellow (1006)
Agar	ISP 3 - G	Good
Agar	ISP 3 - R	Maize yellow (1006)
Agar	ISP 3 - A	None
Agar	ISP 3 - S	None
Agar	ISP 4 - G	Good
Agar	ISP 4 - R	Signal yellow
Agar	ISP 4 - A	None
Agar	ISP 4 - S	None
Agar	ISP 5 - G	Good
Agar	ISP 5 - R	Lemon yellow (1012)
Agar	ISP 5 - A	None
Agar	ISP 5 - S	None
Agar	ISP 6 - G	/
Agar	ISP 6 - R	/
Agar	ISP 6 - A	/
Agar	ISP 6 - S	/
Agar	ISP 7 - G	Good
Agar	ISP 7 - R	Golden yellow (1004)
Agar	ISP 7 - A	None
Agar	ISP 7 - S	Golden yellow (1004)
Agar	suter with tyrosine - G	Good
Agar	suter with tyrosine - R	Ochre brown (8001)
Agar	suter with tyrosine - A	None
Agar	suter with tyrosine - S	Ochre brown (8001)

Compendium of Actinobacteria from Dr. Joachim M. Wink
University of Braunschweig

Agar	suter without tyrosine - G	Good
Agar	suter without tyrosine - R	Beige (1001)
Agar	suter without tyrosine - A	None
Agar	suter without tyrosine - S	None
	Sporechains/Sporangia	
Physiology		
Melanin		+
pH	range	
pH	optimum	
temperature	range	
temperature	optimume	
sodim chloride tolerance		0%
lysozyme tolerance		
use of carbohydrates	glucose	+
use of carbohydrates	arabinose	-
use of carbohydrates	sucrose	+
use of carbohydrates	xylose	-
use of carbohydrates	inositol	+
use of carbohydrates	mannose	+
use of carbohydrates	fructose	+
use of carbohydrates	rhamnose	(+)
use of carbohydrates	raffinose	+
use of carbohydrates	cellulose	+
Api zym	Phosphatase alkaline	0
Api zym	Esterase (C4)	3
Api zym	Esterase Lipase (C8)	3
Api zym	Lipase (C14)	0
Api zym	Leucin arylamidase	1
Api zym	Valine arylamidase	0
Api zym	Cystine arylamidase	0
Api zym	Trypsin	0
Api zym	Chymotrypsin	0
Api zym	Phosphatase acid	2
Api zym	Naphtol-AS-BI-phosphohydrolase	0
Api zym	alpha galactosidase	5
Api zym	beta galactosidase	4
Api zym	beta glucuronidase	0
Api zym	alpha glucosidase	4
Api zym	beta GLUCOSIDASE	1
Api zym	N-acetyl-beta-glucoseamidase	1
Api zym	alpha mannosidase	4
Api zym	alpha fucosidase	0
Api coryne	nitrate reduction	+
Api coryne	Pyraziamidase	-

Api coryne	Pyrrolidonyl arylamidase	-
Api coryne	Alkaline phosphatase	-
Api coryne	beta glucuronidase	-
Api coryne	beta galactosidase	+
Api coryne	alpha glucosidase	+
Api coryne	N-acetyl -beta glucoseamidase	(+)
Api coryne	Esculin (beta glucosidase)	(+)
Api coryne	Urease	+
Api coryne	Gelatine(hydrolysis)	-
Api coryne	Glucose fermentation	-
Api coryne	Ribose fermentation	-
Api coryne	Xylose fermentation	-
Api coryne	Mannitol fermentation	-
Api coryne	Maltose fermentation	-
Api coryne	Lactose fermentation	-
Api coryne	Sucrose fermentation	-
Api coryne	Glycogen fermentation	-

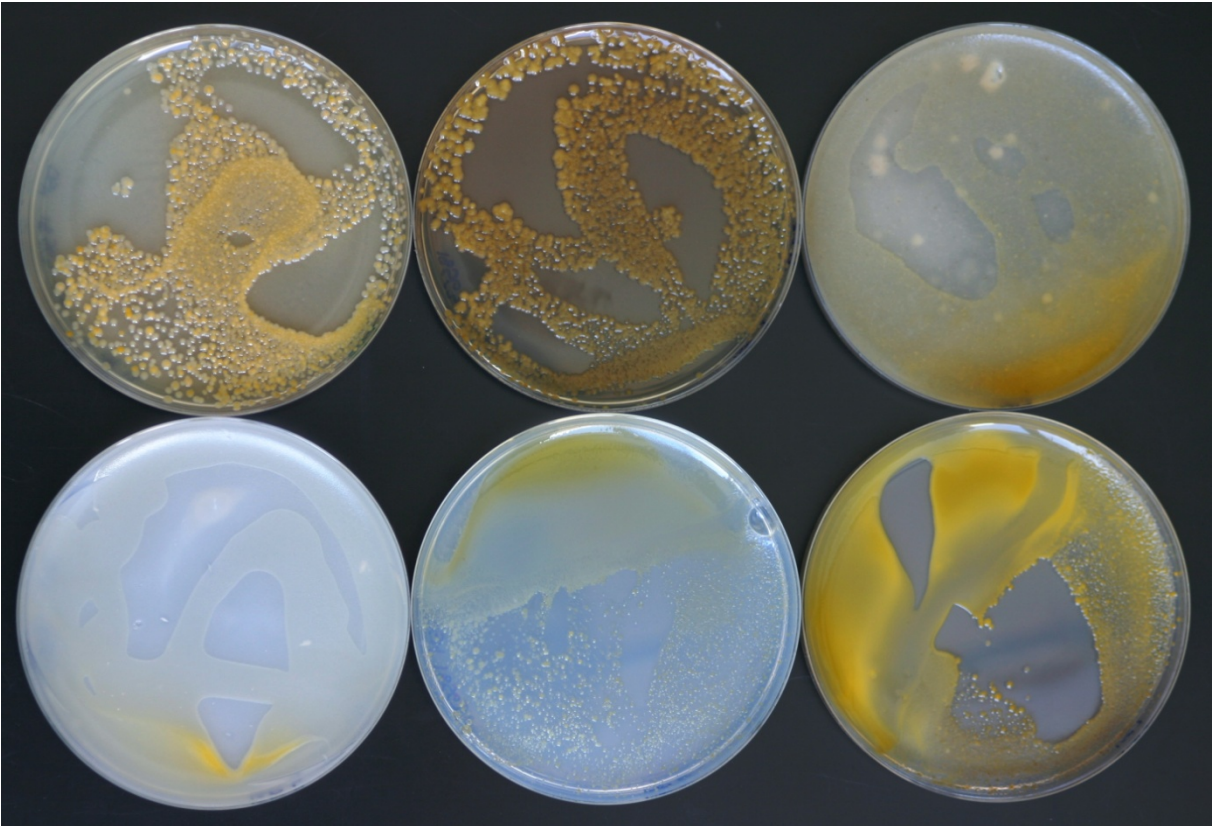
Apicoryne



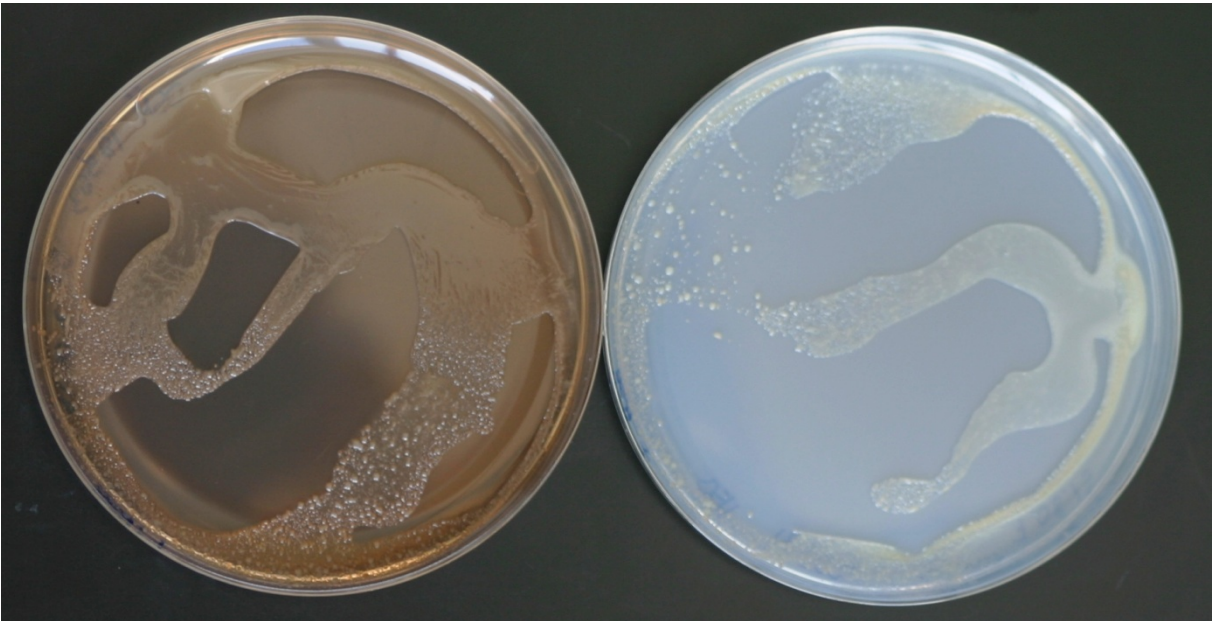
Apizym



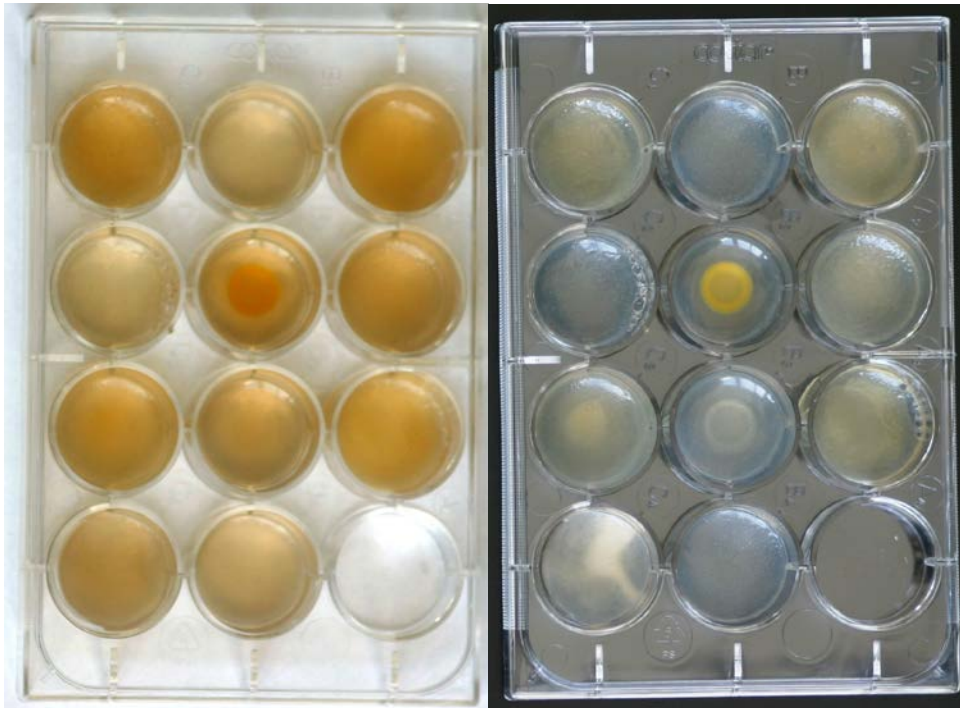
Plates (DSM 92, ISP2, ISP3, ISP4, ISP5, ISP7)



(SSM+T, SSM-T)



Carbon utilization test (from top left to bottom right: glucose, arabinose, sucrose, xylose, inositol, mannose, fructose, rhamnose, raffinose, cellulose)



Sodium chloride tolerance test (from top left to bottom right: 0%, 2,5%, 5%, 7,5%, 10%)

