

Genus	<i>Cellulomonas</i>
Species	<i>gelida</i>
Subspecies	
Author	(Kellerman et al. 1913) Bergey et al. 1923
Reclassification	
Status	valid
Type species	ATCC 488, DSM 20111, IMET 11078, NCIB 8076
Hazard group	1

Fatty acid pattern

13 : 0	Anteiso	6,0
14 : 0	Iso	4,0
14 : 0		11,0
15 : 0	Iso	2,0
15 : 0	Anteiso	30,0
15 : 0		0,5
16 : 0	Iso	9,0
16 : 0		26,0
17 : 0	Anteiso	7,0
18 : 0		3,5

Genus: Cellulomonas

FH 2745

Species: gelida

Numbers in other collections: ATCC 488

Morphology:

<u>ISP 2</u>	G	R
	good	light ivory
	A	SP
<u>ISP 3</u>	none	none
	G	R
	good	ivory
<u>ISP 4</u>	A	SP
	none	none
	G	R
<u>ISP 5</u>	good	colorless
	A	SP
	none	none
<u>ISP 6</u>	G	R
	good	colorless
	A	SP
<u>ISP 7</u>	none	yes
	G	R
	good	colorless
	A	SP
	none	none

NaCl resistance: 5.0%

Temperature: Value- °C Optimum- 28°C

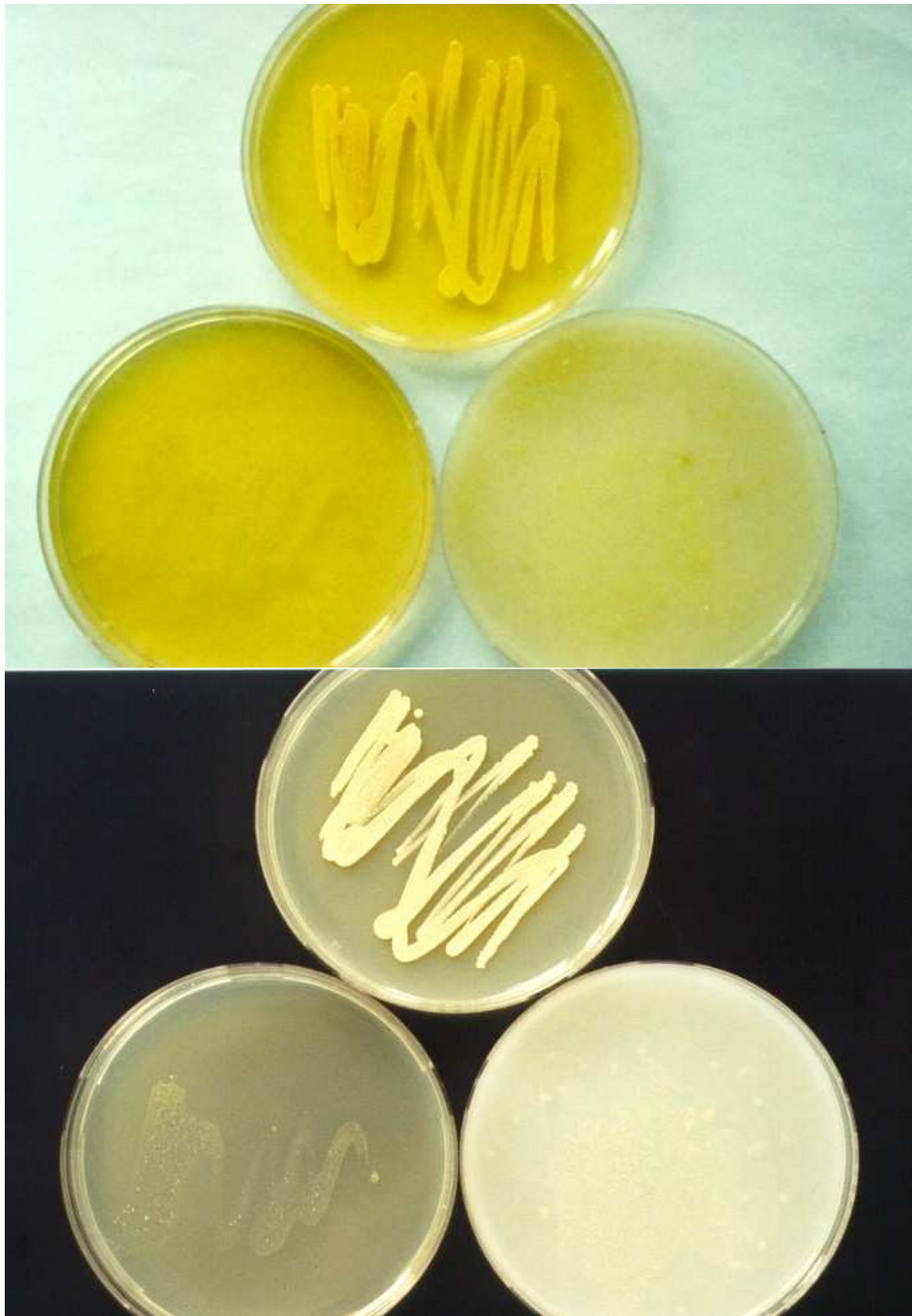
Carbon utilization:

Glu	Ara	Suc	Xyl	Ino	Man	Fru	Rha	Raf	Cel
-	-	v	+	+	-	v	+	v	+

Enzymes:

Api 20E	Gel	Cit	Ure	Arg	Onp	Trp	Lys	Odc	VP	Ind	H ₂ S	
-	-	-	-	-	+	-	-	-	+	-	-	
ApiZym	2	3	4	5	6	7	8	9	10	11	12	
	+	+	+	-	+	+	+	+	+	+	+	
	13	14	15	16	17	18	19	20				
	+	+	-	+	+	+	-	-				
ApiCoryne		Nit	Pyz	Pyr	Pal	βGur	βGal	αGlu	βNag	Esc	Ure	Gel
	+	+	+	-	+	+	+	+	+	+	+	
	Glu	Rib	Xyl	Man	Mal	Lac	Sac	Glyg				
	+	+	-	+	+	+	-	-				

Comments:



Cellulomonas gelida

A and B – Agar plates medium 5006, 5265 and 5315