

Genus	<i>Cellulomonas</i>
Species	<i>fimi</i>
Subspecies	
Author	(McBeth and Scales 1913) Bergey et al. 1923
Reclassification Status	valid
Type spezies	ATCC 484, DSM 20113, IMET 10687, NCIB 8980
Hazard group	1

Genus: *Cellulomonas*

FH 2743

Species: *fimi*

Numbers in other collections: ATCC 484

Morphology:

<u>ISP 2</u>	G	R
	good	colorless
	A	SP
<u>ISP 3</u>	none	none
	G	R
	good	colorless
<u>ISP 4</u>	A	SP
	none	none
	G	R
<u>ISP 5</u>	none	none
	A	SP
	G	R
<u>ISP 6</u>	none	none
	A	SP
	G	R
<u>ISP 7</u>	none	none
	A	SP
	G	R

NaCl resistance:

0%

Temperature:

Value-

°C

Optimum-

28°C

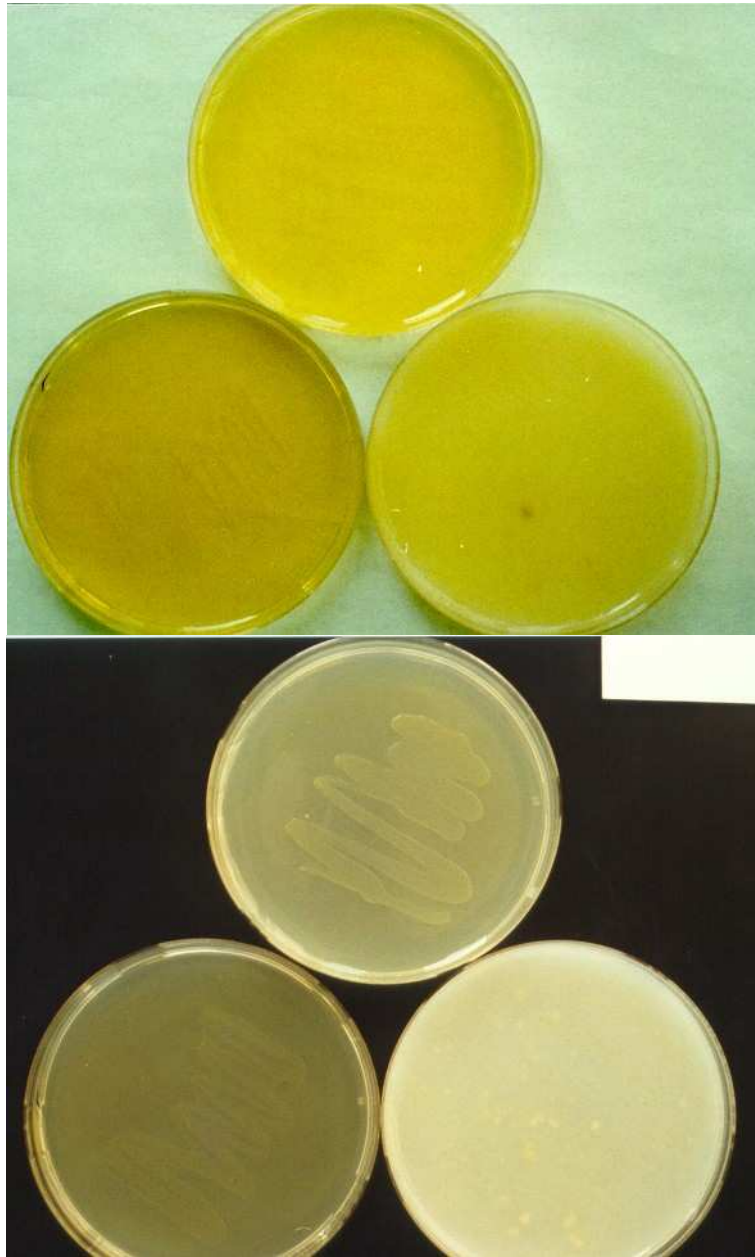
Carbon utilization:

Glu	Ara	Suc	Xyl	Ino	Man	Fru	Rha	Raf	Cel
-	-	v	v	-	-	-	+	+	-

Enzymes:

Api 20E	Gel	Cit	Ure	Arg	Onp	Trp	Lys	Odc	VP	Ind	H2S	
-	-	-	-	-	+	-	-	-	-	-	-	
ApiZym	2	3	4	5	6	7	8	9	10	11	12	
-	-	+	-	+	+	+	+	-	-	+	+	
	13	14	15	16	17	18	19	20				
	+	+	-	+	+	+	-	-				
ApiCoryne		Nit	Pyz	Pyr	Pal	βGur	βGal	αGlu	βNag	Esc	Ure	Gel
-	-	+	-	+	+	+	+	-	-	+	+	
	Glu	Rib	Xyl	Man	Mal	Lac	Sac	Glyg				
	+	+	-	+	+	+	-	-				

Comments:



Cellulomonas fimi

A and B – Agar plates medium 5006, 5265 and 5315