

Genus	<i>Curtobacterium</i>
Species	<i>luteum</i>
Subspecies	
Author	(Komagata and Iizuka 1964) Yamada and Komagata 1972
Synonym	<i>Brevibacterium luteum</i>
Status	valid
Type species	ATCC 15830, DSM 20542, IMET 10360, NCIB 1102
Hazard group	1

Genus: *Curtobacterium*

FH 2790

Species: *luteum*

Numbers in other collections: DSM 20542

Morphology:

<u>ISP 2</u>	G	R
	good	colorless
	A	SP
<u>ISP 3</u>	none	none
	G	R
	good	colorless
<u>ISP 4</u>	A	SP
	none	none
	G	R
<u>ISP 5</u>	good	ivory
	A	SP
	none	none
<u>ISP 6</u>	G	R
	sparse	colorless
	A	SP
<u>ISP 7</u>	none	none
	G	R
	good	honey yellow
<u>ISP 7</u>	A	SP
	none	none
	G	R

NaCl resistance: 5.0%

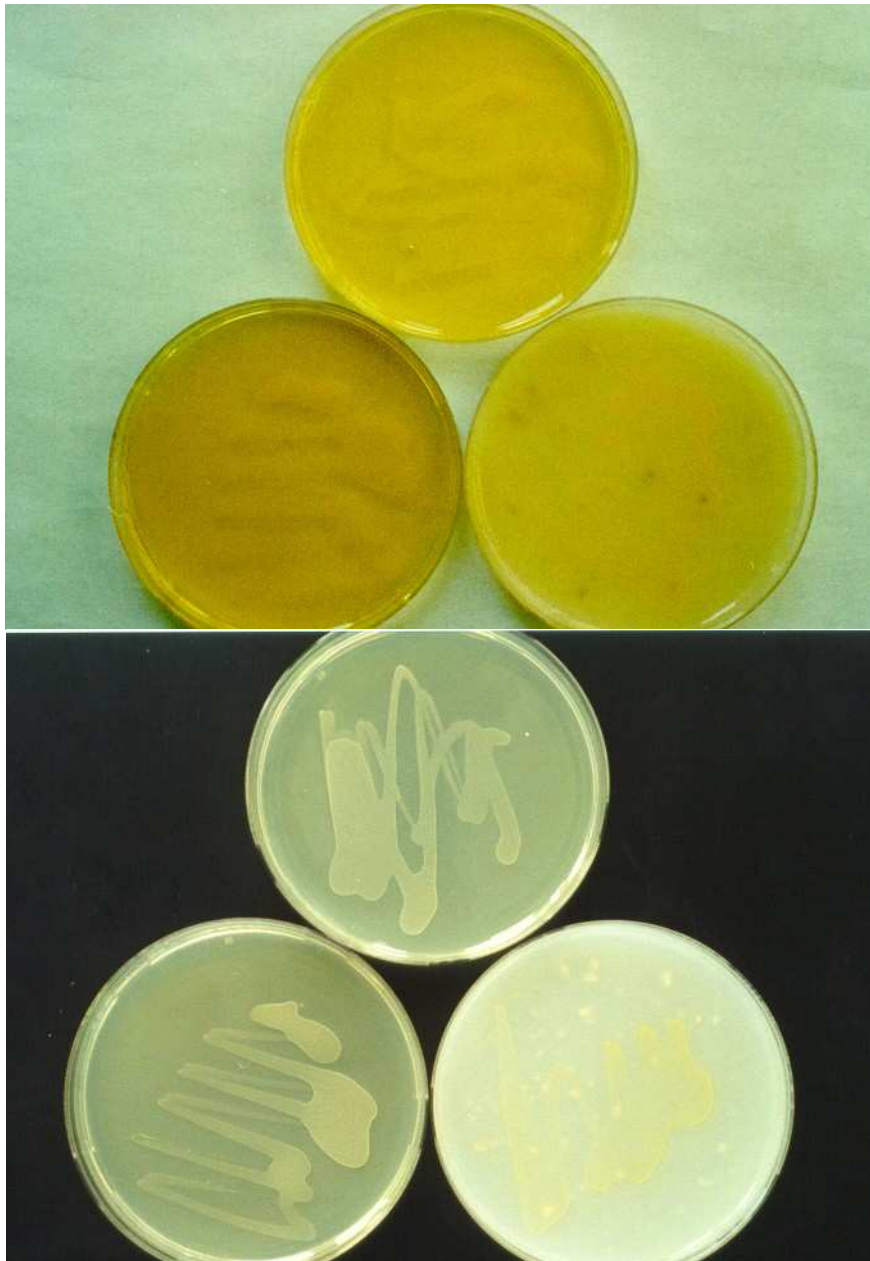
Temperature: Value- °C Optimum- 28°C

Carbon utilization:

Glu	Ara	Suc	Xyl	Ino	Man	Fru	Rha	Raf	Cel
+	+	+	+	+	-	-	-	+	-

Enzymes:

Api 20E	Gel	Cit	Ure	Arg	Onp	Trp	Lys	Odc	VP	Ind	H2S	
-	-	-	-	-	+	-	-	-	v	-	-	
ApiZym	2	3	4	5	6	7	8	9	10	11	12	
-	+	+	-	+	+	+	+	+	+	+	+	
	13	14	15	16	17	18	19	20				
	+	+	-	+	+	+	+	-				
ApiCoryne		Nit	Pyz	Pyr	Pal	βGur	βGal	αGlu	βNag	Esc	Ure	Gel
-	+	+	-	+	+	+	+	+	+	+	+	
	Glu	Rib	Xyl	Man	Mal	Lac	Sac	Glyg				
	+	+	-	+	+	+	+	-				



Curtobacterium luteum

A and B – Agar plates medium 5006, 5265 and 5315