

Name: *Streptomyces lavendulae* subsp. *grasseri*
Authors: (Kuchaeva et al. 1961) Pridham 1970
Status: Approved Lists
Reference(s): Int. J. Syst. Bacteriol. 30:390 (AL)
Risk group: 1 (German classification)
Type strain: ATCC 15875, DSM 40385

Name: ***Streptomyces lavendulae* subsp. *lavendulae***
Authors: (Waksman and Curtis 1916) Waksman
and Henrici 1948

Status: Approved Lists

Reference(s): Int. J. Syst. Bacteriol. 30:390 (AL)

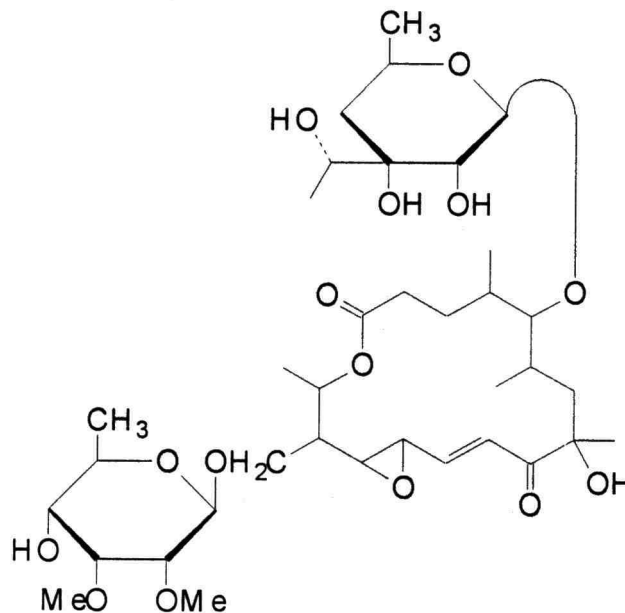
Risk group: 1 (German classification)

Type strain: ATCC 8664, ISP 5069, DSM 40069

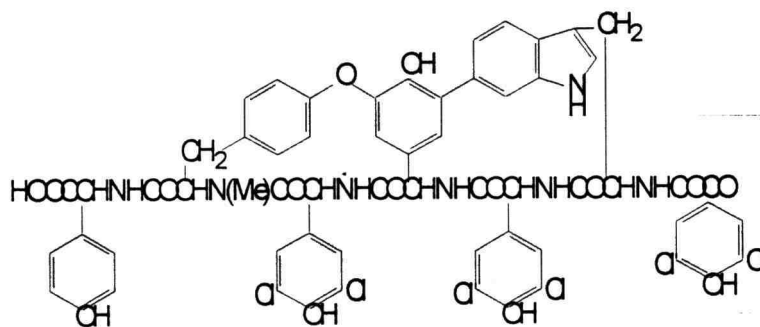
Other names: *Streptomyces colombiensis*
(heterotypic synonym)

Secondary metabolites from *Streptomyces lavendulae*

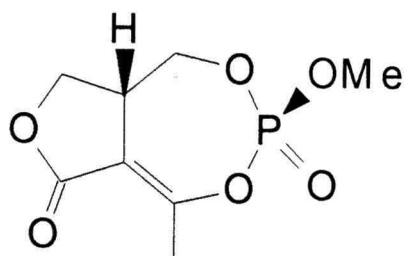
Aldgamycin, macrolide antibiotic, broad spectrum antibiotic



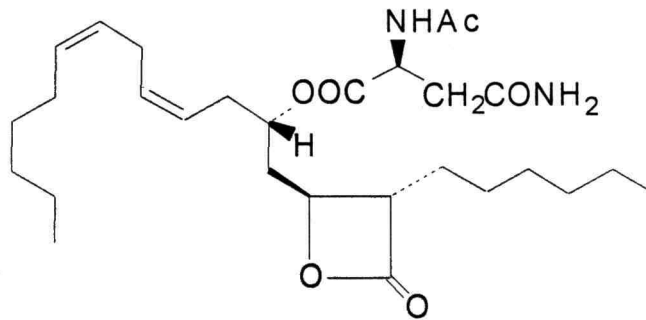
Coplestatin, peptide antibiotic, potent inhibitor of complement system



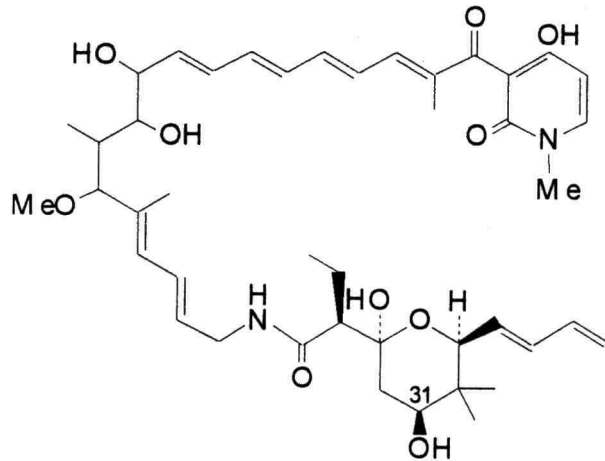
Cyclophostin, acetylcholinesterase inhibitor



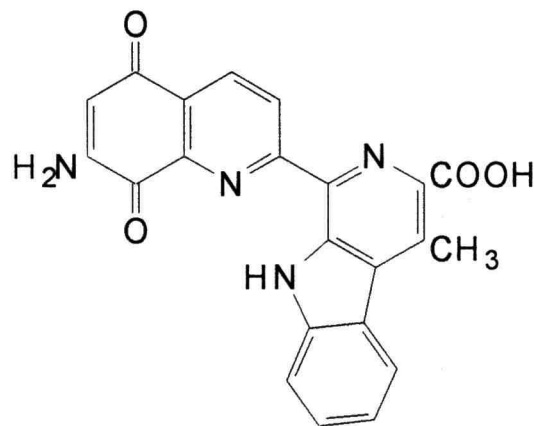
Esterastin, inhibitor of pancreatic esterase



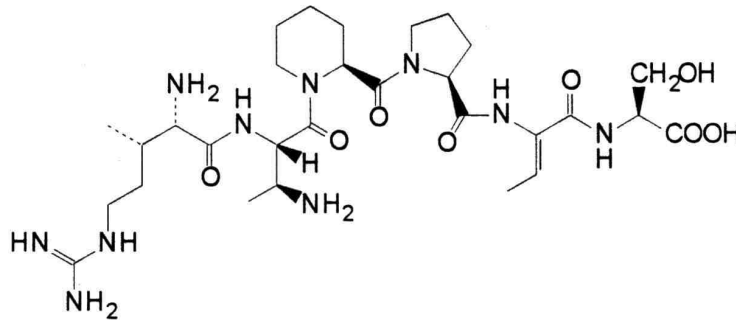
Factumycin, polyene antibiotic, active against gram-positive and -negative bacteria, animal growth promotor



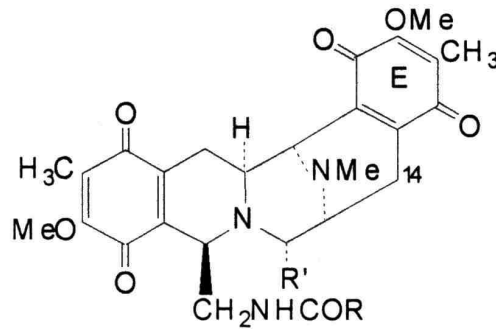
Lavendamycin, quinone antibiotic, antineoplastic



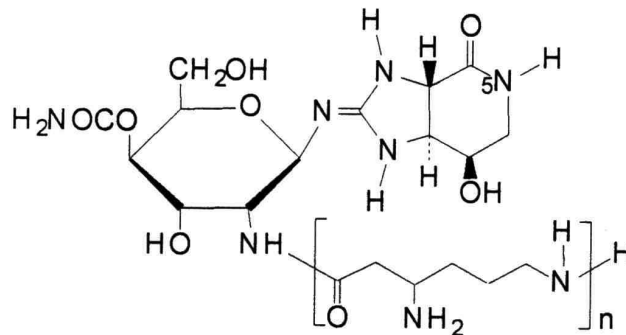
Lavendomycin, oligopeptide antibiotic, active against gram-positive bacteria



Saframycin, antibiotic and antineoplastic



Streptothricin, nucleoside-type antibiotic, shows broad spectrum of activity



n = 1, 2, 3, 4, 5, 6, 7
for Streptothricins F, E, D, C, B, A and X respectively

Genus: *Streptomyces*

FH 2015

Species: *lavendulae*

Subspecies: *lavendulae*

Numbers in other collections: IMET 40330

Morphology:

	G	R
<u>ISP 2</u>	good	yellow/brown
	A	SP
	grey/red	none
	G	R
<u>ISP 3</u>	good	yellow
	A	SP
	grey/red	none
	G	R
<u>ISP 4</u>	good	brown
	A	SP
	grey/red	none
	G	R
<u>ISP 5</u>	good	yellow
	A	SP
	grey	none
	G	R
<u>ISP 6</u>	good	yellow
	A	SP
	grey	brown
	G	R
<u>ISP 7</u>	good	yellow
	A	SP
	grey	brown

Spore chains: RF

Spore surface: smooth

Sporangia:

Fragmentation:

Melanoid pigment: +

NaCl resistance:

Lysozyme resistance: -

pH: Value-

Optimum-

Temperature : Value-

Optimum- 28°C

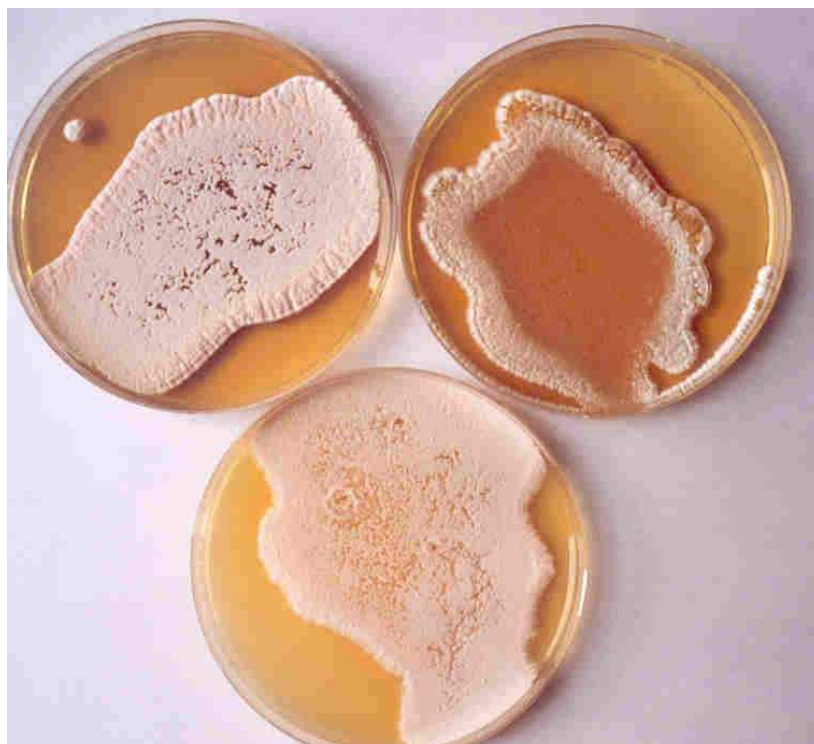
Carbon utilization:

Glu	Ara	Suc	Xyl	Ino	Man	Fru	Rha	Raf	Cel
+	-	-	-	-	-	-	-	-	

Enzymes:

Gel	Cit	Ure	Arg	Onp	Trp	Lys	Odc	VP	Ind	H2S
-	-	-	+	+	+	-	-	-	-	-

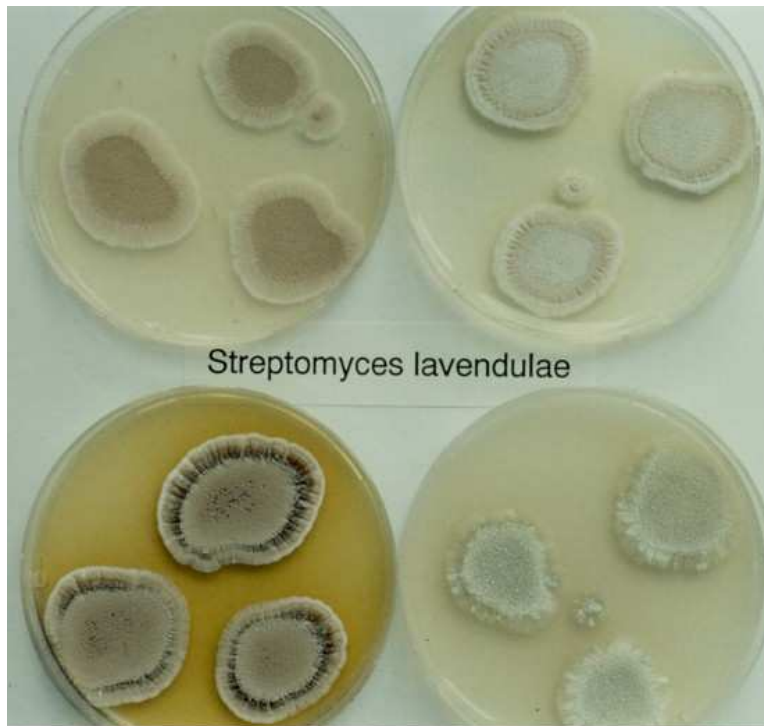
Comments:



Streptomyces lavendulae* subsp. *lavendulae
A and B – Agar plates medium 5006, 5265 and 5315

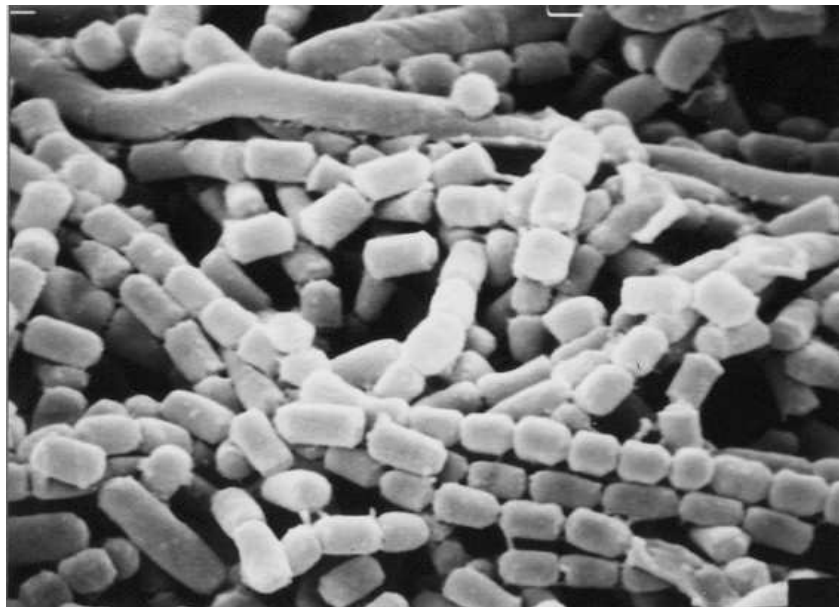
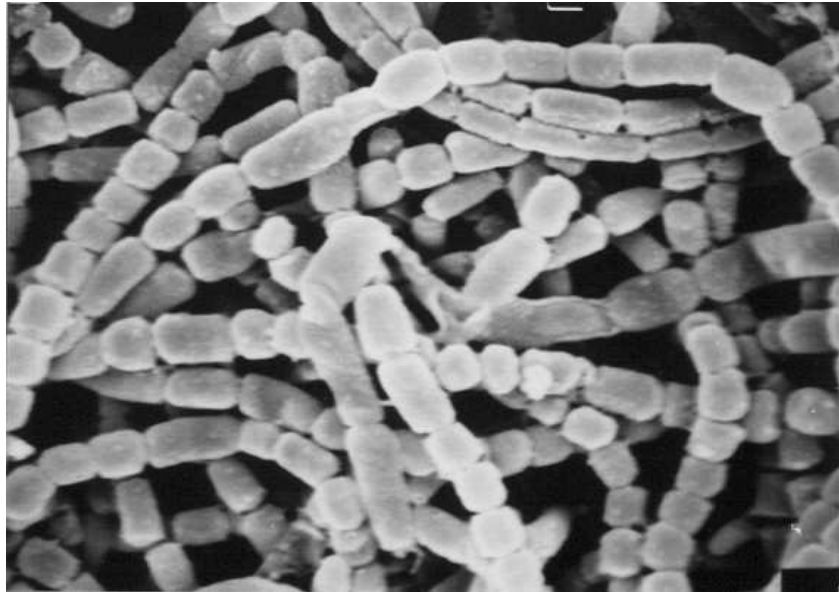


Streptomyces lavendulae* subsp. *lavendulae
C and D – Microplate with ISP- and melanin media



Streptomyces lavendulae* subsp. *lavendulae

E and F – Agar plates medium 5315, 5323, 5265 and 5317



Streptomyces lavendulae* subsp. *lavendulae
Spore chain morphology and spore surface in SEM
G and H x 7.500

Name: *Streptomyces colombiensis*
Authors: Pridham et al. 1958
Status: Subjective Synonym
Reference(s): Int. J. Syst. Bacteriol. 30:378 (AL)
Risk group: 1 (German classification)
Comment: synonymy based on DNA/DNA homology Syst.
Appl. Microbiol. 13:363 (1990)
Type strain: ATCC 27425
Reclassified: *Streptomyces lavendulae* subsp. *lavendulae*