

Compendium of Actinobacteria from Dr. Joachim M. Wink
University of Braunschweig

Strain		DSM 40133
Genus		<i>Streptomyces</i>
Species		<i>resistomycificus</i>
Status		Species
Risk group		L1
Type strain		DSM 40133, NRRL 2290
Reference		
Author		Lindenbein, W.
Title		Über einige chemisch interessante Actinomycetenstämme und ihre Klassifizierung.
Journal		Arch.Mikrobiol.
Volume		17
Page		361-383
Year		1952
Morphology		
Agar	ISP 2 - growth/G	Good
Agar	ISP 2 - colony color/R	Olive brown
Agar	ISP 2 - aerial mycelium/A	none
Agar	ISP 2 - soluble pigment/S	None
Agar	ISP 3 - G	Good
Agar	ISP 3 - R	Nut brown
Agar	ISP 3 - A	Signal grey
Agar	ISP 3 - S	none
Agar	ISP 4 - G	Good
Agar	ISP 4 - R	Fawn brown
Agar	ISP 4 - A	Dusty grey
Agar	ISP 4 - S	None
Agar	ISP 5 - G	Good
Agar	ISP 5 - R	Grey brown
Agar	ISP 5 - A	Sparse
Agar	ISP 5 - S	None
Agar	ISP 6 - G	n.d.
Agar	ISP 6 - R	n.d.
Agar	ISP 6 - A	n.d.
Agar	ISP 6 - S	n.d.
Agar	ISP 7 - G	Good
Agar	ISP 7 - R	Black brown
Agar	ISP 7 - A	none
Agar	ISP 7 - S	None
Agar	suter with tyrosine - G	
Agar	suter with tyrosine - R	
Agar	suter with tyrosine - A	
Agar	suter with tyrosine - S	
Agar	suter without tyrosine - G	

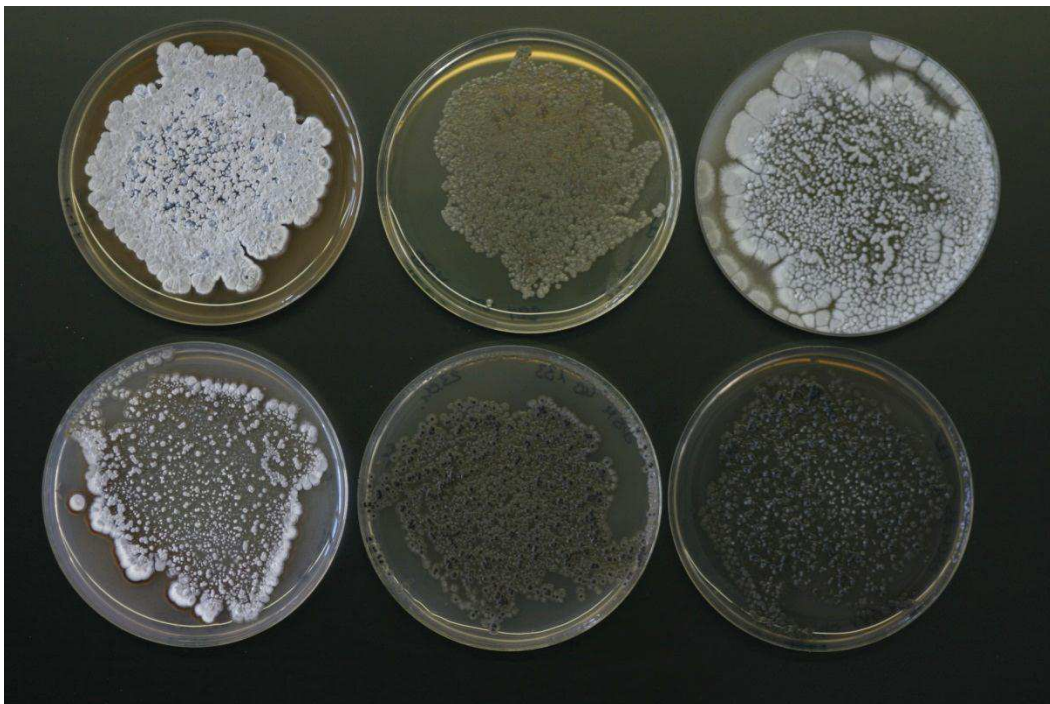
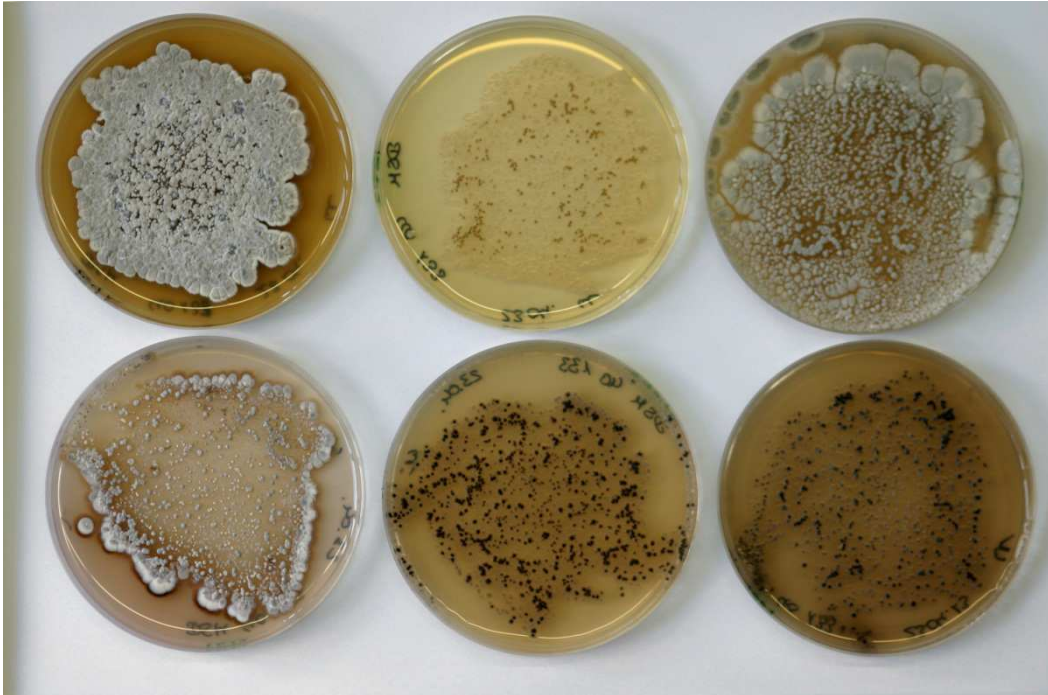
Compendium of Actinobacteria from Dr. Joachim M. Wink
University of Braunschweig

Agar	suter without tyrosine - R	
Agar	suter without tyrosine - A	
Agar	suter without tyrosine - S	
	Sporechains/Sporangia	
Physiology		
Melanin		-----
pH	range	
pH	optimum	
temperature	range	
temperature	optimume	28
sodim chloride tolerance		
lysozyme tolerance		
use of carbohydrates	glucose	+
use of carbohydrates	arabinose	++
use of carbohydrates	sucrose	-
use of carbohydrates	xylose	+
use of carbohydrates	inositol	++
use of carbohydrates	mannose	++
use of carbohydrates	fructose	++
use of carbohydrates	rhamnose	+
use of carbohydrates	raffinose	++
use of carbohydrates	cellulose	-
Api zym	Phosphatase alcaline	+
Api zym	Esterase (C4)	-
Api zym	Esterase Lipase (C8)	-
Api zym	Lipase (C14)	-
Api zym	Leucin arylamidase	+
Api zym	Valine arylamidase	+
Api zym	Cystine arylamidase	-
Api zym	Trypsin	+
Api zym	Chymotrypsin	-
Api zym	Phosphatase acid	+
Api zym	Naphtol-AS-BI-phosphohydrolase	-
Api zym	alpha galactosidase	-
Api zym	beta galactosidase	+
Api zym	beta glucuronidase	-
Api zym	alpha glucosidase	+
Api zym	beta GLUCOSIDASE	+
Api zym	N-acetyl-beta-glucoseamidase	+
Api zym	alpha mannosidase	-
Api zym	alpha fucosidase	-

ApiZym-Test



Plates (GYM, ISP2, ISP3, ISP4, ISP5, ISP7)



Carbon utilization test

