

Name: ***Streptomyces rubiginosohelvolus***

Authors: (Kudrina 1957) Pridham et al. 1958

Status: Approved Lists

Reference(s): Int. J. Syst. Bacteriol. 30:400 (AL)

Risk group: 1 (German classification)

Type strain: ATCC 19926, CBS 943.68, IFO 12912, ISP 5176,
RIA 1136, DSM 40176

Genus: *Streptomyces*

FH 2030

Species: *rubiginosohelvolus*

Numbers in other collections: DSM 40176

Morphology:

<u>ISP 2</u>	G	R
	good	yellow
	A	SP
<u>ISP 3</u>	yellow	none
	G	R
	good	yellow
<u>ISP 4</u>	A	SP
	white	none
	G	R
<u>ISP 5</u>	good	yellow
	A	SP
	white	brown
<u>ISP 6</u>	G	R
	good	yellow
	A	SP
<u>ISP 7</u>	none	none
	G	R
	good	yellow
	A	SP
	yellow	none

Spore chains: RF

Spore surface: smooth

Sporangia:

Fragmentation:

Melanoid pigment: - - (+) -

NaCl resistance: 5 %

Lysozyme resistance: -

pH: Value- Optimum-

Temperature : Value- Optimum- 28 °C

Carbon utilization:

Glu	Ara	Suc	Xyl	Ino	Man	Fru	Rha	Raf	Cel
+	+	-	-	-	+	+	+	-	-

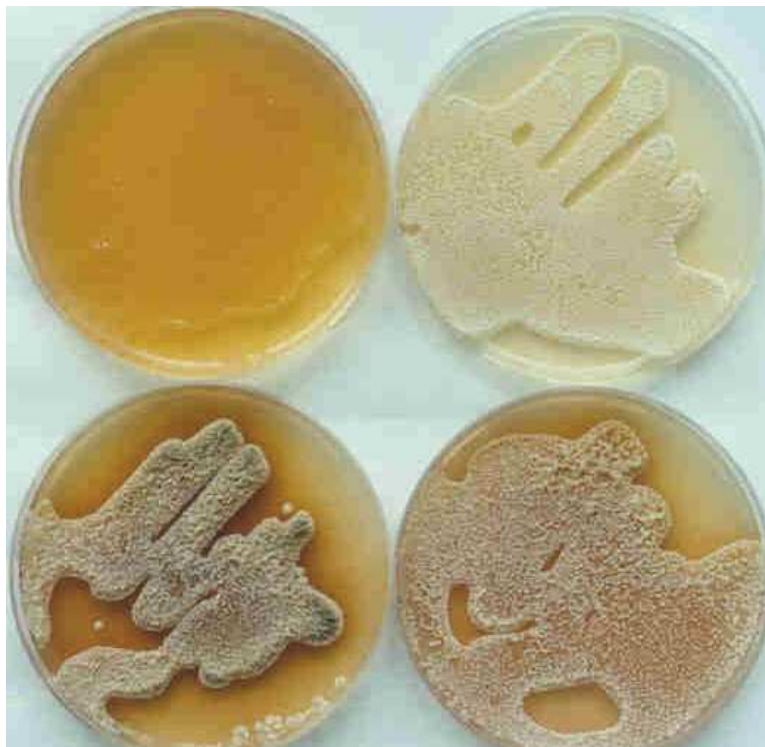
Enzymes:

Gel	Cit	Ure	Arg	Onp	Trp	Lys	Odc	VP	Ind	H2S
+	+	+	+	-	-	+	+	+	-	-
2+	3+	4+	5-	6+	7+	8+	9+	10+	11+	12+
13-	14-	15-	16-	17-	18-	19-	20-			



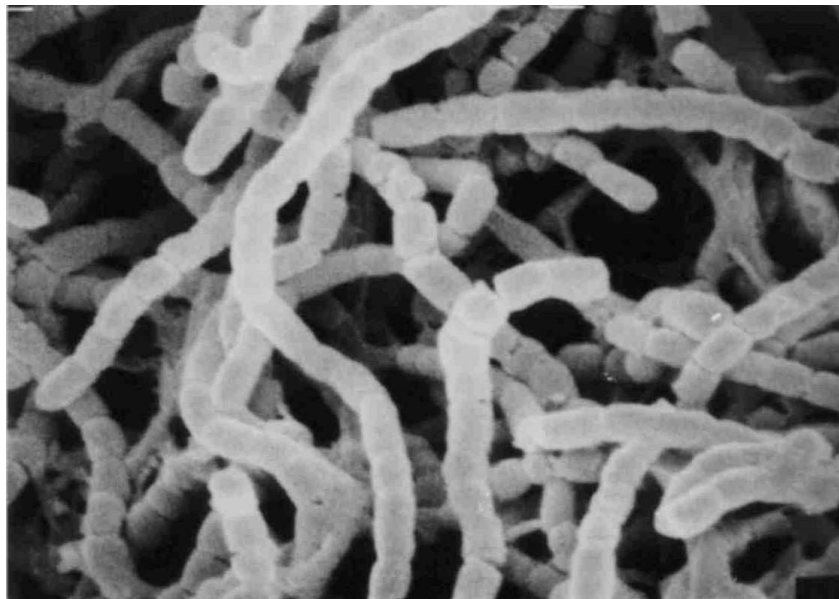
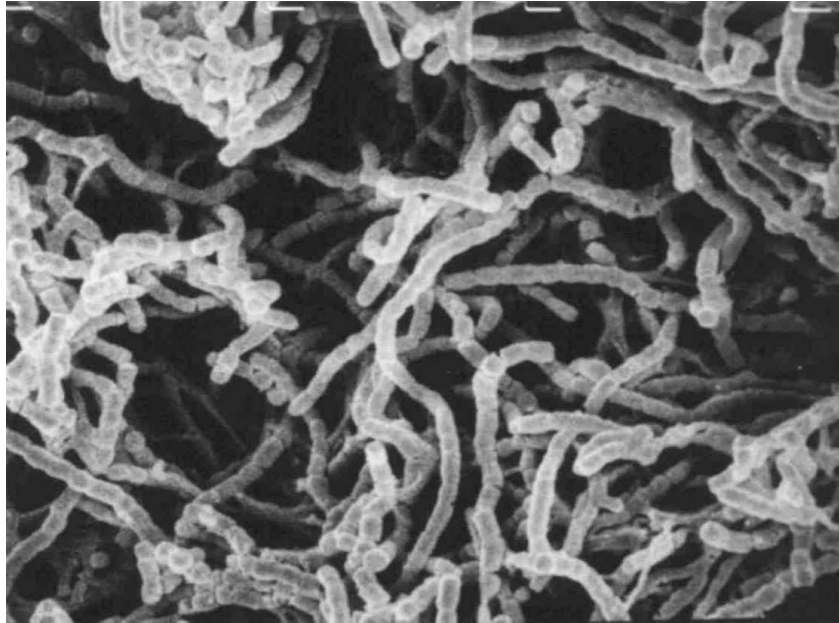
Streptomyces rubiginosohelvolus

A and B – Agar plates medium 5315, 5265, 5323 and 5317



Streptomyces rubiginosohelvolus

C and D – Agar plates medium 5318, 5322, 5337 with and without tyrosine



Streptomyces rubiginosohelvolus

Spore chain morphology and spore surface in SEM

E x 3.500 F x 7.500